

Site Design Projects

FEMA Temporary Housing Joplin, MO

CHALLENGE

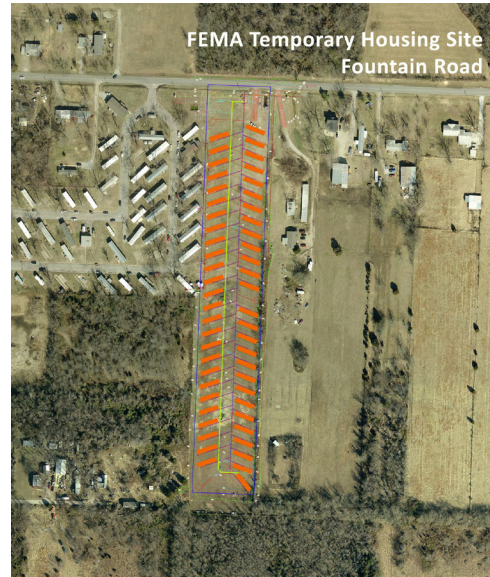
The May 22 Joplin tornado created the need for temporary housing units for displaced residents. These housing units needed to be designed and constructed in a very accelerated time schedule (2 weeks on Hope Haven Site II) in order to provide safe shelter.

SOLUTION

In cooperation with FEMA, the City of Joplin and Shaw Group, TSE joined the team to provide site design services for several temporary housing sites. As a subconsultant to Shaw Group, TSE performed site grading, water and sewer, and paving plans for approximately 175 temporary housing units on two independent sites. Additional paving plans were completed for approximately 350 temporary housing units on two other sites.

FEATURES

- Accelerated time schedule
- Sub-Consultant on a Federal Contract. Shaw Group is the Prime Contract holder with FEMA for this project.
- This project required numerous changes and flexibility in scope.



Reference: **Kevin Neal**
Shaw Group
913-317-3571

